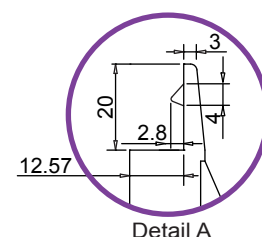
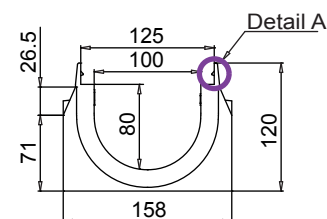
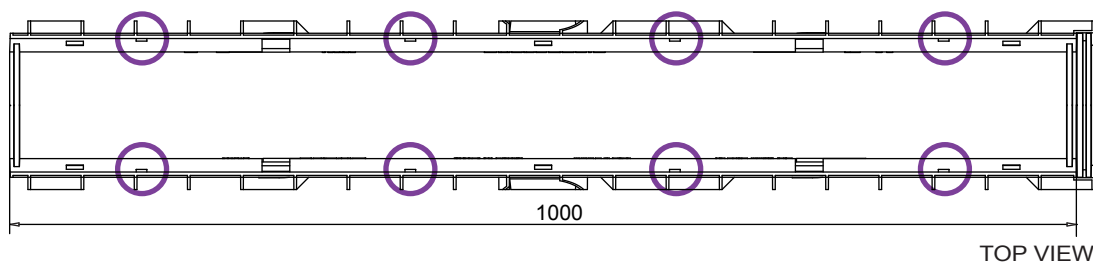
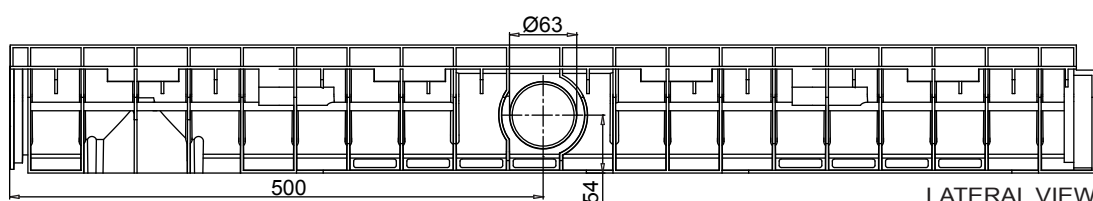
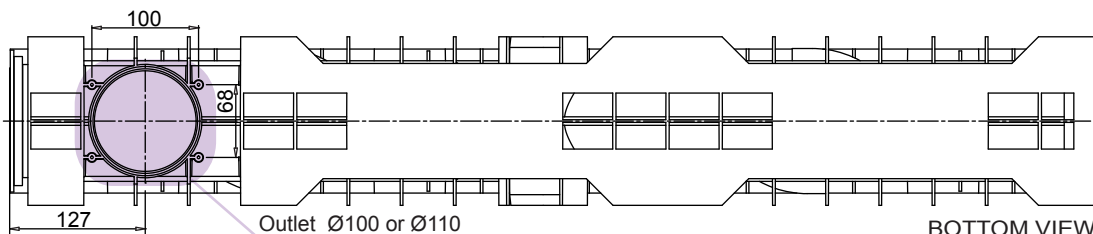


## Channel in PE-HD SKIP 100/80



### New.

1. The new mufledrain channels can also be joined together with the gratings/covers already installed on in order to reduce installation times.
2. The new mufledrain channels have new fixing-to-channels systems, as the inner side HD-PE pins and the unreleased quick fasten clips, for an easy and safe gratings installation.
3. The inner surface guarantees an high roughness index and do not have any external passing hole in order to avoid and water infiltration.

Watertight: To ensure the watertight of the channels, it is advisable to use an adhesive bituminous sealing. As a complete and long lasting guarantee of absence of leakages through the joints of the channels, it is possible to hot-solder the joints

## Data Sheet

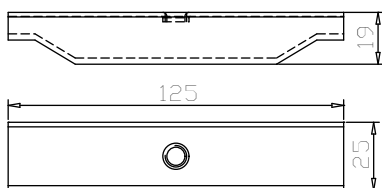
### Dimensions and features

N.B. Dimensions and weights are subjected to the normal tolerances of the manufacturing

Length (mm)	1000
External width (mm)	158
External high (mm)	120
Internal width (mm)	100
Internal high (mm)	80
Outlets	1 x Ø100*/Ø110* - 2 x Ø63
Material	HD-PE
Weight (Kg)	1.75
Drainage section (cm <sup>2</sup> )	69.28
Capacity (dm <sup>3</sup> = litres)	6.92

\*For drainage purposes use the drain gate with outlet kit (available in two versions Ø100 and Ø110).

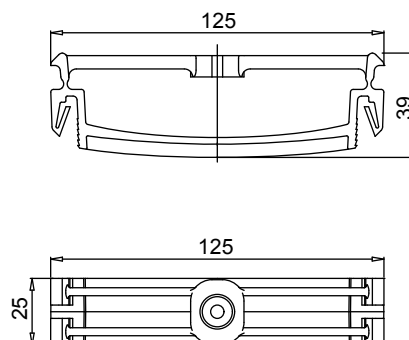
## Fixing for Channel HD-PE SKIP 100/80



### Tie-Rod

Code Galvanized	500412
Code Stainless Steel	500413
Code Black Galvanized	500414

rev. 00



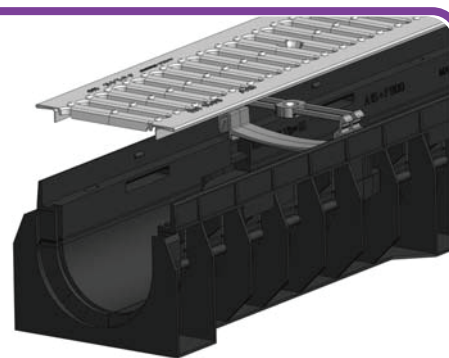
### Clip Nylon

Code	510206
------	--------

rev. 00



Assembling with Tie-Rod



Assembling with Clip Nylon

## Gratings

## Materials

## Class

## Fixing

Slotted  
 Mesh 33x33  
 Mesh 33x1  
 Mesh  
 Slot 20 mm  
 Slot 6 mm  
 Mesh  
 Slot 7 mm

galvanized, stainless steel  
 galvanized, stainless steel  
 galvanized, stainless steel  
 ductile iron  
 ductile iron  
 ductile iron  
 HD-PE  
 HD-PE

A15  
 A15-B125  
 A15-B125  
 B125-C250  
 C250  
 C250  
 \*\*\*  
 \*\*\*

Tie-Rod/Clip  
 Tie-Rod  
 Tie-Rod  
 Tie-Rod/No Fixing  
 Tie-Rod/No Fixing  
 Tie-Rod/No Fixing  
 Tie-Rod/Clip/No Fixing  
 Tie-Rod/Clip/No Fixing

The products have to be installed according to MufleSystem's specifications (available on our web site)